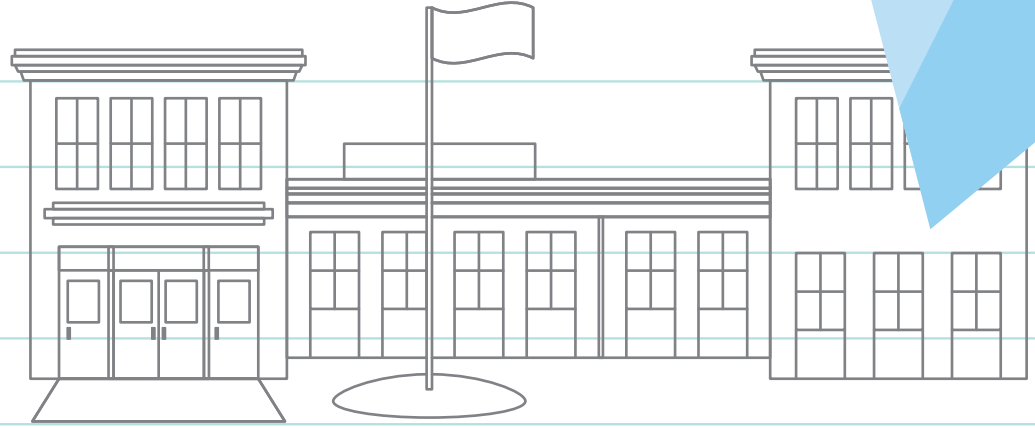
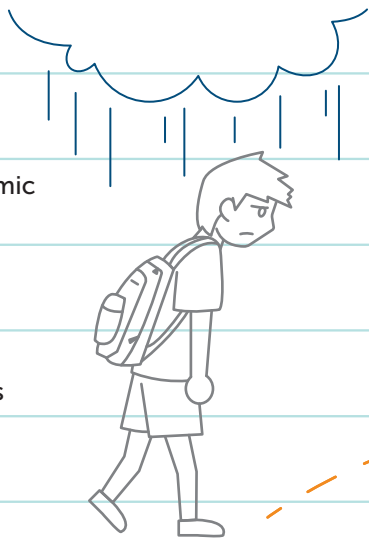


Addressing the Challenge of Disruptive Classrooms

In the past three years, elementary schools have seen a dramatic rise in disruptive student behavior. This epidemic is taking up valuable instructional time and accelerating teacher burnout, as teachers report not getting the support they need from both school and district leaders.

Our youngest learners are surrounded by distractions and distress...

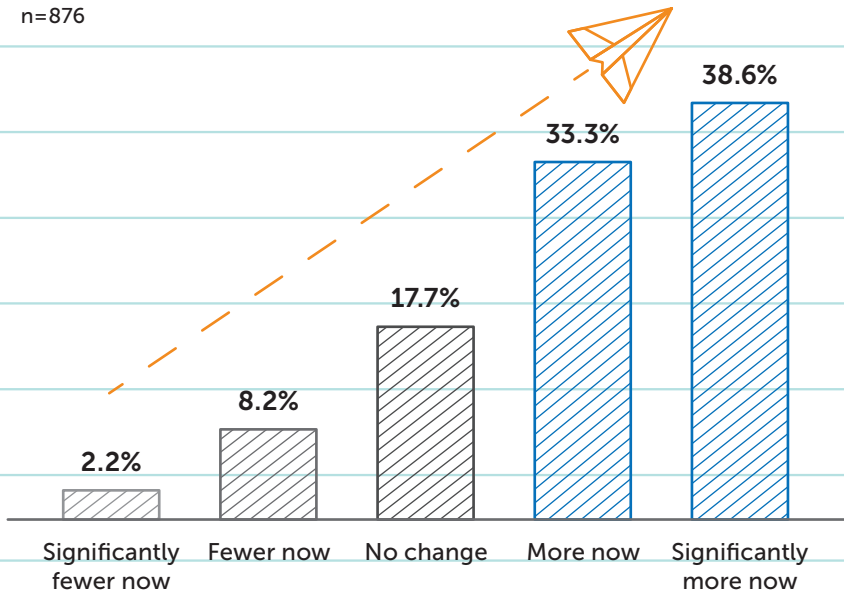
- ▶ Effects of the Great Recession
- ▶ Increased Academic Pressure
- ▶ Excessive Screen Time
- ▶ Rise in Mental Health Diagnoses
- ▶ Decrease in Time for Physical Play
- ▶ Changes in Family Structure
- ▶ Increases in Substance Abuse



...and the impact is showing up in schools across the country.

EAB survey shows many teachers are facing behavioral disruptions* in the classroom multiple times a week...

How has the frequency of behavioral disruptions in your classroom changed over the last three years? (% of teachers) n=876



* These behaviors include tantrums, emotional disconnect/unresponsiveness, bullying, threats, verbal or physical abuse toward a student or teacher, and eloping.

...and the cost of lost instructional time adds up across the school year.

144 minutes per week of instructional time lost to behavioral disruption according to teachers

14.5 school days per year lost to behavioral disruption



Teachers feel they don't get the support they need from their administrators.



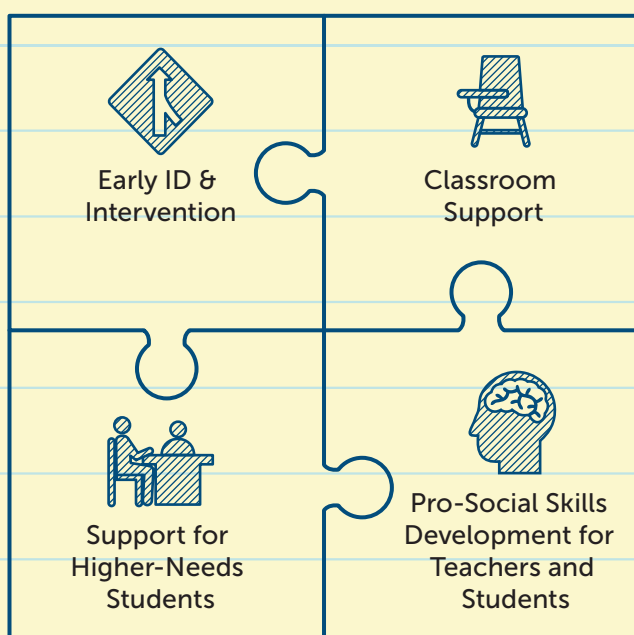
5.5/10

How well supported do you feel by your school in managing disruptive behaviors?
10 Point Scale; 1=Not at all supported, 10=Very supported

It's not your fault, but it is your problem.

Educators need help. Our study, "Managing Behavioral Disruptions in Early Grades," details 15 best practices to help districts provide the necessary support to both educators and students.

Essential Steps



EAB

District Leadership Forum

Learn more about managing behavioral disruptions in the classroom

eab.com/disruptiveclassrooms

© 2019 by EAB. All Rights Reserved. 36563