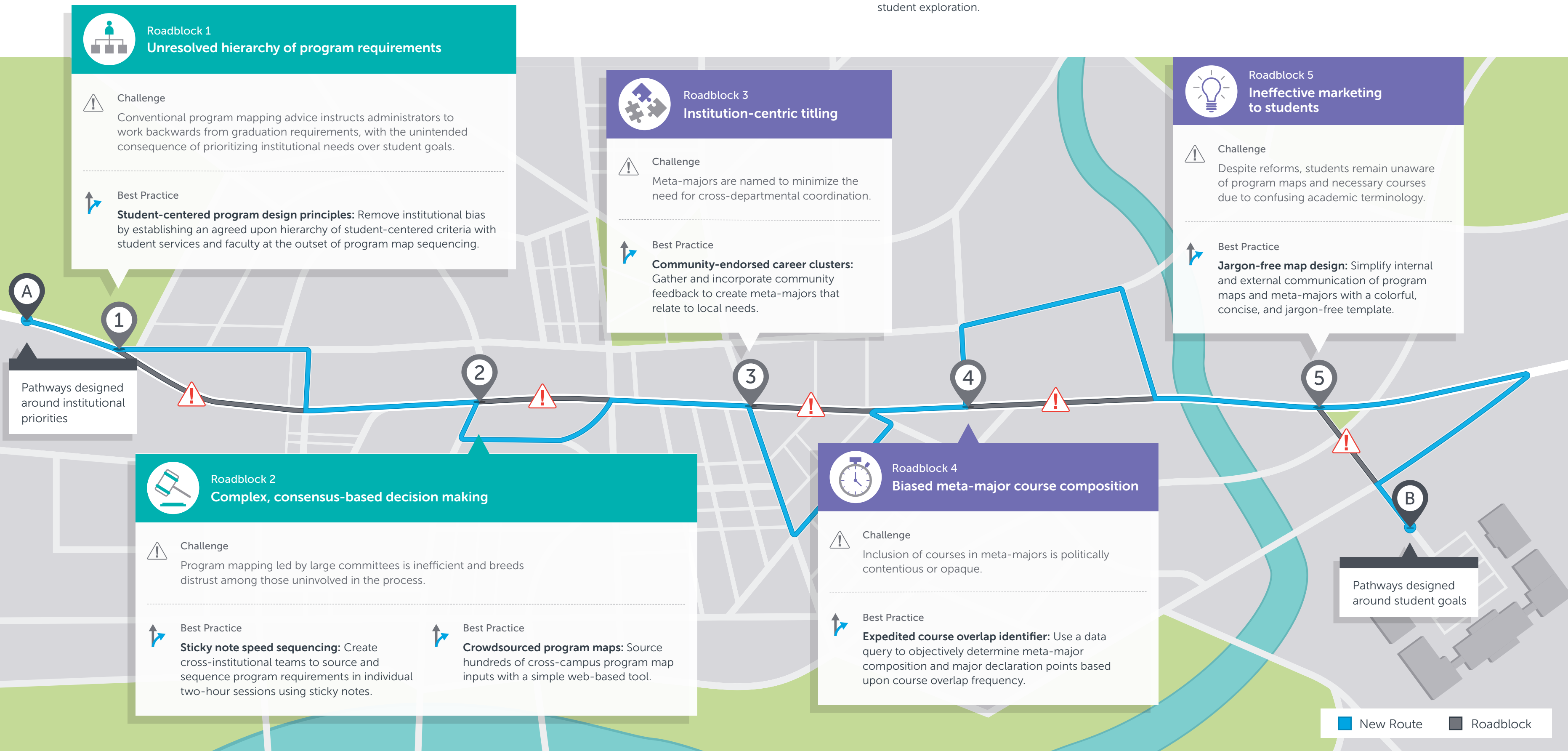


# Overcome the Roadblocks on Your Route to Student-Centric Pathways

Most community college students struggle to efficiently complete their degrees within the desired time frame. While life factors are often cited as the most common reason for the delay, many students simply don't know the logical (and shortest) sequence for completing all the necessary courses.

One of the hardest, but most critical, parts of developing pathways is constructing the program maps and meta-majors behind them. Institutional politics or history can get in the way, leaving student goals by the wayside. And if the program maps and meta-majors aren't right, subsequent reforms to advising, enrollment, or course scheduling will be off as well.

To design successful pathways with students at the center, program maps and meta-majors must be based on clear principles that eliminate institutional biases and maximize the amount of time for student exploration.



Build Program Maps

Develop Meta-Majors