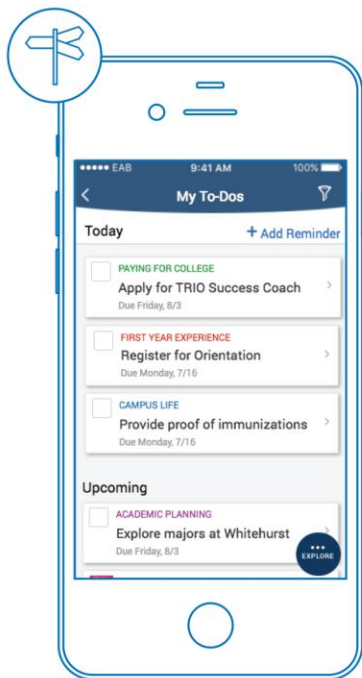
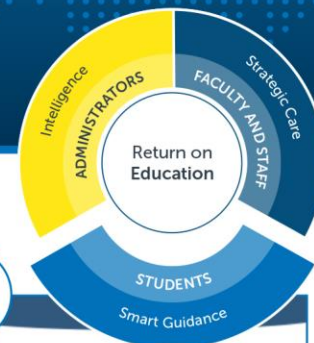


Smart Guidance for Students: Milestone Guidance Module

Dynamic Mobile and Desktop Platform Provides Tailored Support to Help Students Succeed

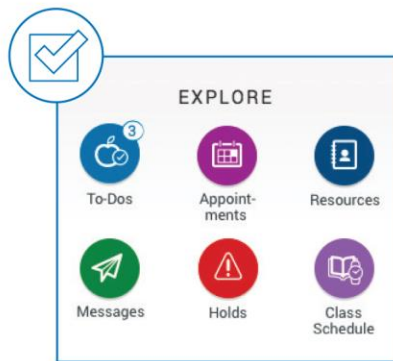


Pivotal Moments Path

EAB researchers have identified “pivotal moments” (or turning points) across a student’s college journey that factor into, or jeopardize, his or her success.

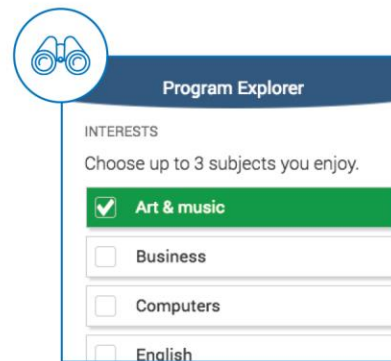
The Pivotal Moments Path organizes key onboarding and ongoing guidance in a prioritized timeline so that students can navigate their college journey with confidence. Students see only the content relevant to them, based on multiple datasets, including in-app micro-surveys, SIS, and in-app student activity.

Alert notifications remind students about important deadlines and overdue tasks.



Term-to-Term Tools

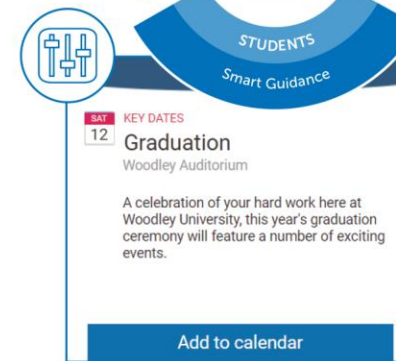
Equip students to take action, including scheduling appointments with staff in their personal success network, viewing their class schedule, joining study groups, looking up resources, and clearing holds.



Program Explorer

Allow students to initiate a program of study and engage in career exploration early in the college experience.

Based on students’ interests and career preferences, the Program Explorer generates a customized list of best-fit programs and job recommendations paired with real-time career data.



Content Administration Tool

Create, customize, and manage the content that students see.

Administrators can tailor and maintain path items to reflect your school’s unique events, dates, and requirements.



Student Milestone Analytics

Track student behavior to monitor engagement and inform student intervention strategies.

Members Seeing Rapid Adoption and Robust Usage Among Their Students

92%

Attendance of advising appointments following nudging campaigns in Navigate

ARAPAHOE COMMUNITY COLLEGE

94%

Of freshmen downloaded the mobile platform in first-year seminars

ROBERT MORRIS UNIVERSITY

80%

Of steps completed by students in the mobile platform on average

METROPOLITAN STATE UNIVERSITY OF DENVER

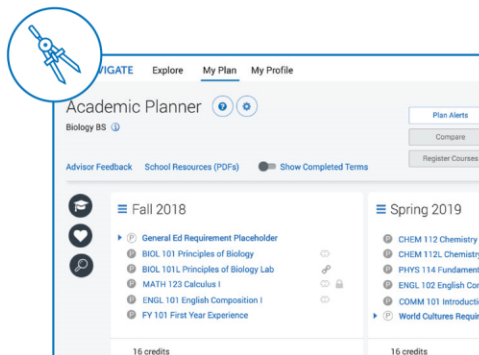
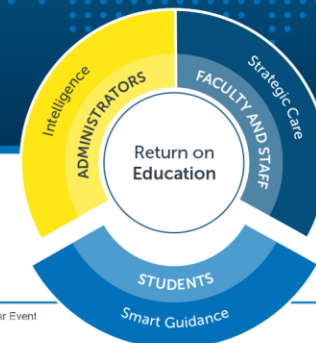
97%

Of students who used Navigate plan to use it again

TRIDENT TECHNICAL COLLEGE

Smart Guidance for Students: Academic Planning Module

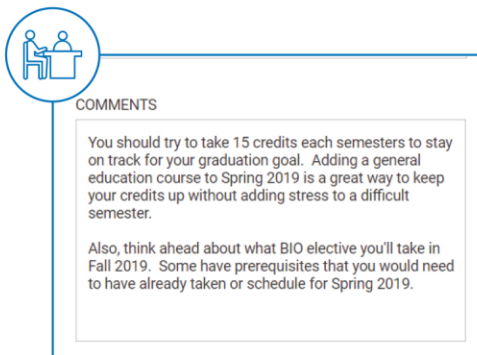
Collaborative Academic Plan Building, Scheduling, and Registration Within a Single Platform



Course and Term Planning

Empower students to build academic plans optimized for on-time graduation. Students can easily search the course catalog and add courses to their plan.

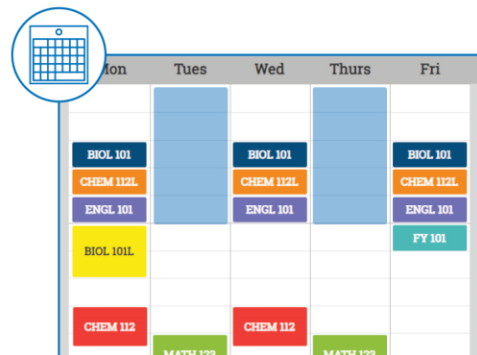
The platform colocates degree maps, program requirements, and completed coursework for easy reference. Automated guardrails alert students to common planning errors and inefficiencies.



Shared Workspace

Foster ongoing collaboration and meaningful interactions between advisors and students by providing an asynchronous, online workspace to create and edit academic plans, as well as track historical changes along the way.

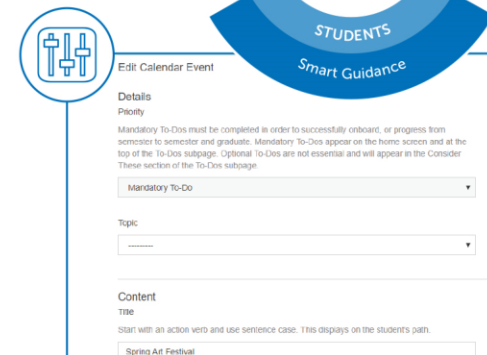
Using Advanced Search, advisors can identify students with planning errors, and then contact those students through targeted campaigns.



Best-Fit Scheduling and Registration

Assist students in building schedules that align with students' availability, preferred course format, and location preferences.

Students can register for courses directly in the platform (at schools with access to APIs for registration). Schools can choose to turn on wait-listing functionality.



Content Administration Tool

The tool provides approved administrators with the ability to create, customize, and manage the content that students see, and to continuously create, edit, and publish content in real time, without the need to request or consult EAB personnel.

Degree maps and course logistics can be uploaded to, created in, and maintained within the platform.



Academic Planning Analytics

Improve capacity planning at the program, course, and section levels via analysis of students' planned courses and scheduling preferences.

Academic Planning Efficiencies Further Student Progress While Saving Advisor Time

7%

Increase in advising sessions for new students from fall 2016 to fall 2017

PIKES PEAK COMMUNITY COLLEGE

34 hours

Advisor hours saved each week due to automated advising reports

WIREGRASS COMMUNITY COLLEGE

\$79K

Additional revenue from higher applicant enrollment rate through optimized advising

WIREGRASS COMMUNITY COLLEGE

34.9%

Increase in applicant conversion due to streamlined academic scheduling

CERRO COSO COMMUNITY COLLEGE