

APS Summit

2019

Navigating Student Success with APS

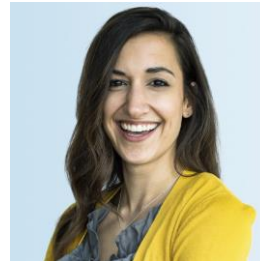
Session for Student Success Collaborative Members



Your Facilitators



Brian Parady
APS Dedicated Consultant
BParady@eab.com



Sara Kuzmik
Senior Strategic Leader, Student Success
SKuzmik@eab.com

Objective of Today's Session

- Learn from others how they have used APS and Navigate together
- Gather feedback to inform future supporting resources

Delineating Two of Our Technologies



Academic Performance Solutions

Performance and analytics platform designed to empower academic and financial leaders with department-level data and peer benchmarks to make more effective decisions.

- ▶ Types of Analytics: Seat utilization, enrollment, course completion rates, costs, instructional staff headcount, workload, and benchmarks
- ▶ Key Stakeholders: Provost, Associate Provosts, Deans, Department Chairs, Institutional Research (IR)

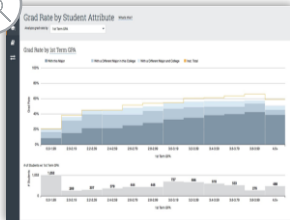
Navigate

Student Success Management System (SSMS) designed to help employees and students in a coordinated care network proactively manage student success and deliver a Return on Education.

- ▶ Types of Analytics: Historical Trend Analytics, Predictive Analytics, Population Health Analytics and, Intervention Effectiveness Analytics
- ▶ Key Stakeholders: Administrators, Faculty, Advisors, and Other Staff

Intelligence for Administrators in Navigate

Analytics Help Leaders Translate Insights Into Action



Historical Trend Analytics

Identify opportunities and evaluate patterns of student success, risk, and failure using up to 10 years of historical data unique to your institution.



Population Health Analytics

Track key academic performance and progress indicators with dashboards that help you identify intervention opportunities across discrete student populations.



Predictive Analytics

Understand both cohort-level and individual student risk to facilitate timely and strategic care across all student groups. Our **machine learning** engine ingests up to 10 years of historical data to custom configure a predictive model customized for your institution.



Effectiveness Analytics

Analyze and compare the progress and performance of student cohorts over time to assess the impact of interventions within and beyond Navigate.

Members Unlocking the Power of Data to Guide Impactful Changes

8 fewer

Excess credit hours at graduation on average, after re-targeting resources based on analytics

GEORGIA STATE UNIVERSITY

2%

Increase in undergraduate persistence following data-driven changes to curricular policies

UNIVERSITY OF NORTHERN COLORADO

120

Degree plans created based on historical data trends, in order to reduce time to degree

SALISBURY UNIVERSITY

27+

Courses re-designed following analysis and identification of "barrier" courses

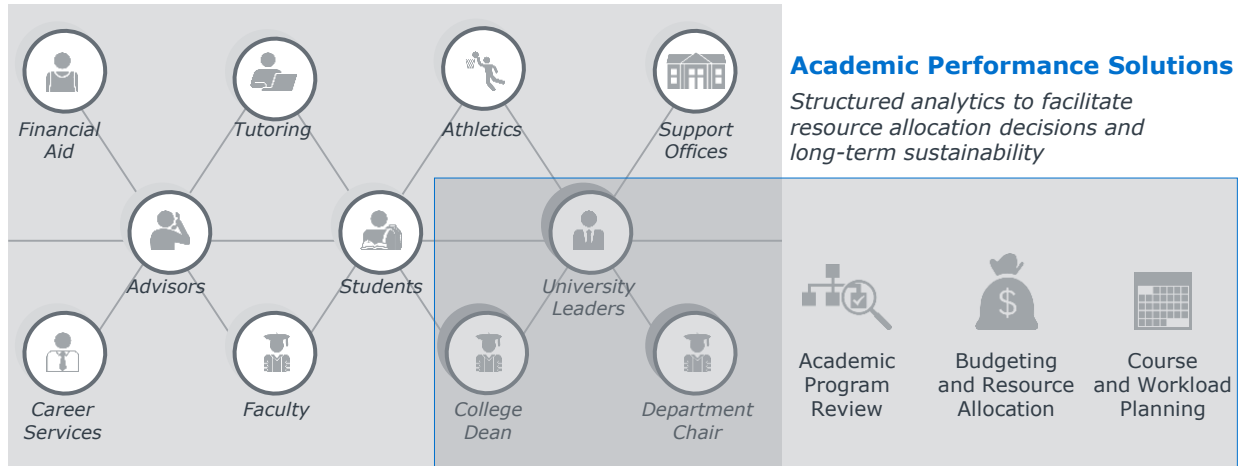
MIDDLE TENNESSEE STATE UNIVERSITY

Distinct Technologies with Points of Overlap

Leveraging Both Technologies to Promote Student Outcomes

Navigate

An enterprise-level technology that connects key stakeholders in a coordinated care network on campus, helping institutions proactively manage student success and deliver a Return on Education





Nancy Biggio, PhD

*Associate Provost for Administration,
Associate Professor of Core Curriculum*

Samford University



Advancing Student Outcomes Using APS and Navigate

Samford University | Private Master's University

Pinpointed Gateway Courses Using APS Data

Fundamentals of Chemistry and Pre-Calculus

- High enrollment → **982** Unearned attempted SCH in both courses
- Low course completion rates → **28%** DFW rate
- High section variation in course completion → **31%** Range in section variation for *Pre-Calculus*

Launched Progress Report Campaigns Using Navigate

- **Intervened Early**: Instructors teaching students in Pre-Calculus provided feedback on student progress, revealing which students needed additional support
- **Flagged Potential Risk Factors**: Collected information on a student's likelihood for not earning credit for a course, their current or anticipated grade, current absences, and other potential factors

Results After One Year



7.8

Percentage point increase in Pre-Calculus from 75.2% to 83%



11.3

Percentage point increase in Fundamentals of Chemistry from 63.3% to 74.6%



159

Additional attempted student credit hours earned in both courses

Make an Outsized Impact on Student Outcomes



	Course Planning	Course Completion	Program Review
With Navigate	<ul style="list-style-type: none">• Identify students with course registration concerns in key courses• Intervene by encouraging students to register in the right number and mix of courses	<ul style="list-style-type: none">• Identify students with academic performance concerns in key courses• Intervene by connecting students with support services, like tutoring and advising	<ul style="list-style-type: none">• Compare student graduation outcomes across programs and identify programs that require attention• Understand the impact of major switching on time-to-degree
With APS	<ul style="list-style-type: none">• Identify over and under-filled courses and sections• Intervene by expanding bottlenecks and collapsing under-filled sections	<ul style="list-style-type: none">• Identify courses with the most unearned SCH• Intervene by considering structural changes, such as new training for graduate instructors or updating curriculum	<ul style="list-style-type: none">• Compare enrollment trends at your institution to trends at peer institutions• Understand inter-disciplinary demand for coursework across departments

Discussion Questions

- 1 How has your institution leveraged the power of both technologies together?
- 2 In what ways can you use both APS and Navigate to support your institution's student success initiatives? Planning processes?
- 3 What more can EAB do to support your institution with using both technologies? Consider specific resources that would be valuable.



Washington DC | Richmond | Birmingham | Minneapolis

202-747-1000 | eab.com