

CHOOSING THE Right College for You

Not All Colleges Are Created Equal

You may already know that choosing the right college can make all the difference for your future. But do you know what makes a college right for you? You are probably building your college list based on the likelihood of being admitted and dividing schools into "safety," "match," and "reach." That's a good start, but did you know that schools that accept students with similar GPA and test scores can have very different graduation rates? This means that you may be less likely to graduate from one college than another, even if the two schools seem very similar.

Your road to college graduation starts here!

Safety

- College A
- College B

Match

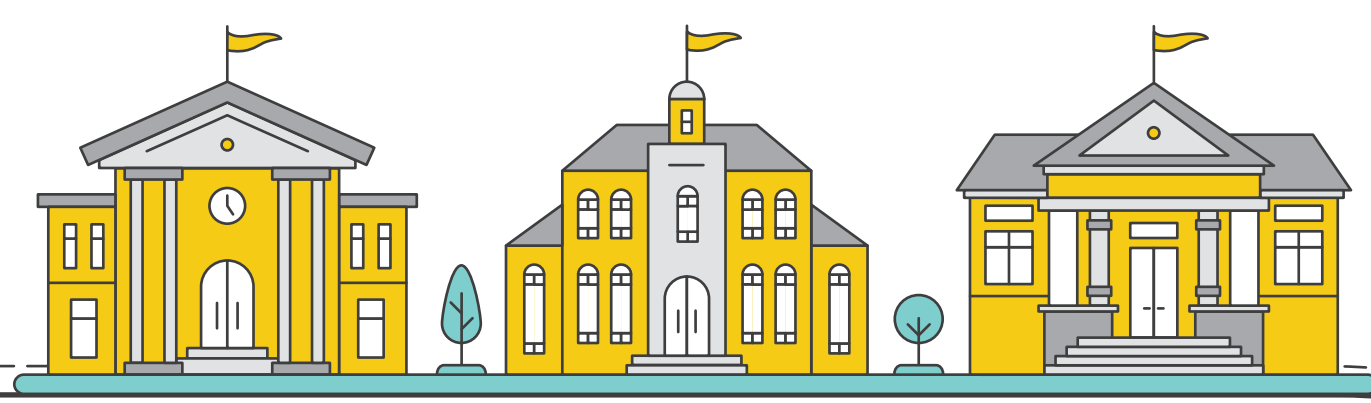
- College C
- College D
- College E

Reach

- College F
- College G

Where Can I Get In?

Most students choose colleges based on familiarity, cost, distance, and how likely they are to be admitted to each school.



Where Am I Most Likely to Graduate?

Graduation rates can be very different between colleges. When creating your school list and making your choice, be sure to check each school's graduation rate.

Acceptance Rate	65%	66%
Average ACT Score	23–27	22–29
Average SAT Score	1040–1260	1010–1280
Average HS GPA	3.3	3.3
Graduation Rate	68%	55%

Did You Know?

Schools with similar selectivity can have very different graduation rates.



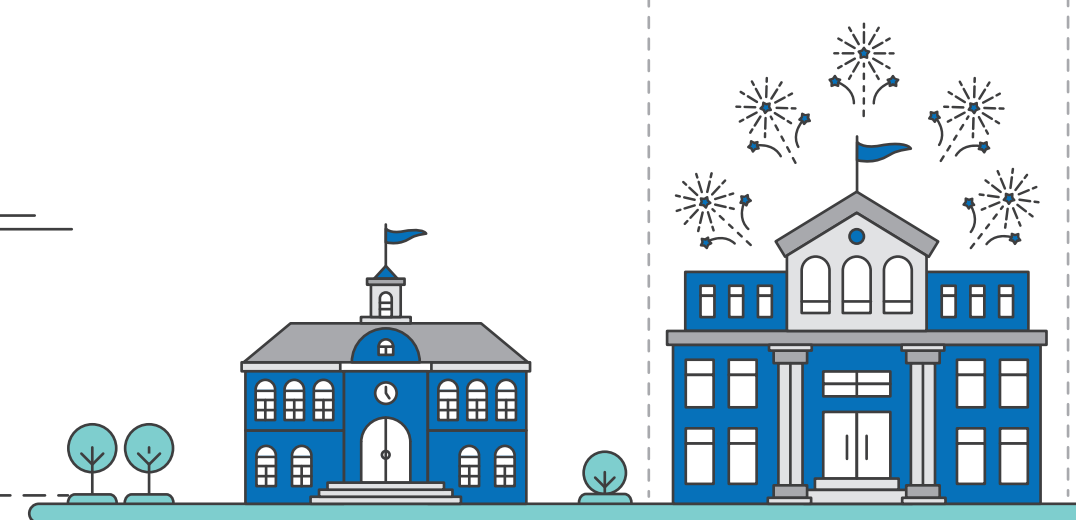
Did You Know?

Schools with similar average graduation rates can have very different outcomes for different students.

Graduation Rate	68%	64%
Graduation Rate for Students like Me*	49%	60%

Which Schools Are Right For Me?

When choosing a college, look for the graduation rates for students like you. Use the Department of Education's free College Navigator tool and speak to your counselor to find out specific graduation rates for students like you at each school.



* Graduation rates can vary based on race, ethnicity, gender, income, and more.