



APS

Virtual Summit

Building Long-Term Decision Agility with Education Data Hub

Expansion Spotlight



Student Data Viewed as Central to Institution Agility



Increased Frequency and Urgency of Student Data Needs

- Emerging and changing concerns translate to constant cycle of ASAP data requests
- Insights gleaned from student data being asked to inform near-term action

Challenges:

- ▶ Historically **strained role of IT / IR resources** is expanding
- ▶ **No margin for error** when making critical decisions



Looking to New and Untapped Pieces of Student Data

- Rapid transition to virtual learning requires new measures of student engagement
- Aggregate view of student data across legacy of student-centric tech investments

Challenges:

- ▶ **Lack of experience** accessing and utilizing new datasets
- ▶ Relevant data is **locked downstream in siloed systems**



Measuring Efficacy of Decisions Informed by Student Data

- Campus leaders being held accountable for data-informed decisions via ongoing reporting
- Past the reactive phase; now identifying pivot points and sustainable go-forward strategies

Challenges:

- ▶ **Ongoing data integrity** to ensure trustworthy analyses
- ▶ Evolving band-aid methods to **meet new standard of agility**



A Complicated and Time-Consuming Process

Difficult (If Not Impossible) To Be Agile Without Some Automation



DEFINE



BUILD



SYNTHESIZE

1 Define / translate data request

2 Identify relevant data sources

3 Verify data availability and veracity

4 Authorize data use / sharing with system owner

5 Extract custom data from (each) source system

6 Pool native data from multiple sources

7 Verify data quality, cleanse extracted data

8 Establish data crosswalks and relationships (data model)

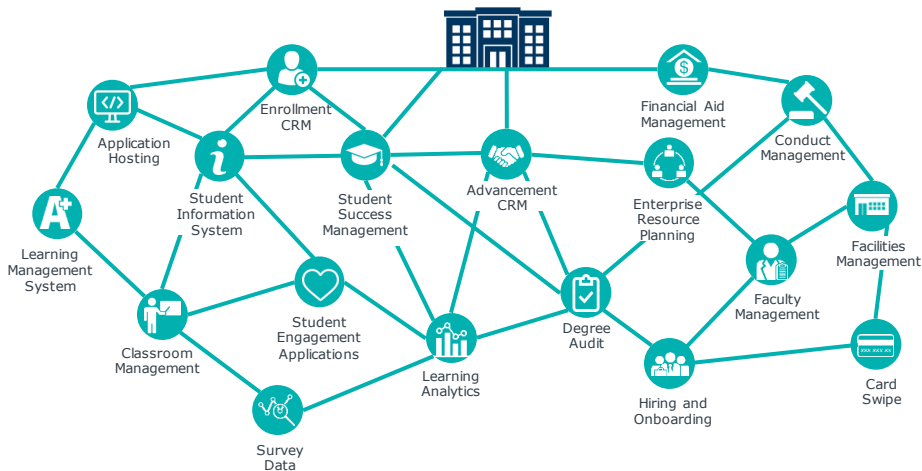
9 Feed relevant data to BI / data visualization tool

10 Build data visualization and run analysis

11 Monitor data, surface insight, and fulfill request

12 Seek feedback—rinse and repeat...

A Challenging Environment for Data Initiatives



1 Constant Integrations Lead to Architecture by Accident

"We can only do the minimum needed to say, "it's integrated!" so we can move on to the next."

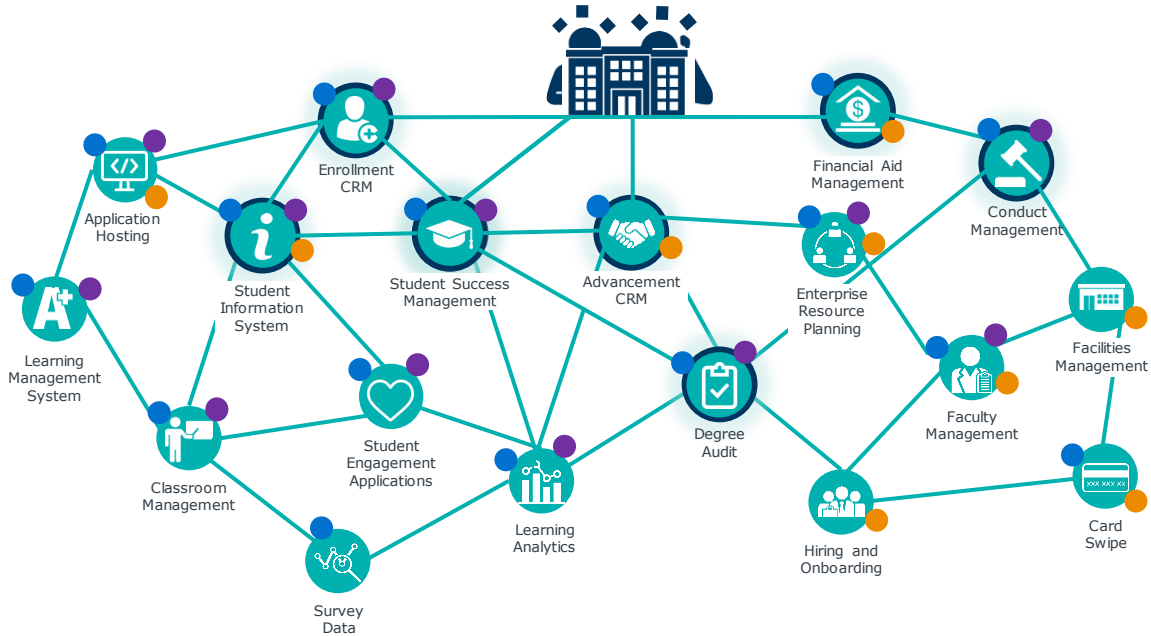
2 Competing Narratives Resulting from Siloed Data

"There are five different numbers for freshman enrollment depending on who you ask."

3 Institutions Are Data Rich, But Insight Poor

"Our President has a question today, but it will be 3-4 weeks until we can provide the answer."

Data Initiatives Hampered by Campus Tech Ecosystem



Introducing the Education Data Hub

A Data Management Platform to Unify and Organize Data Across Campus



EDUCATION DATA HUB

STUDENT DATA



ACADEMIC DATA



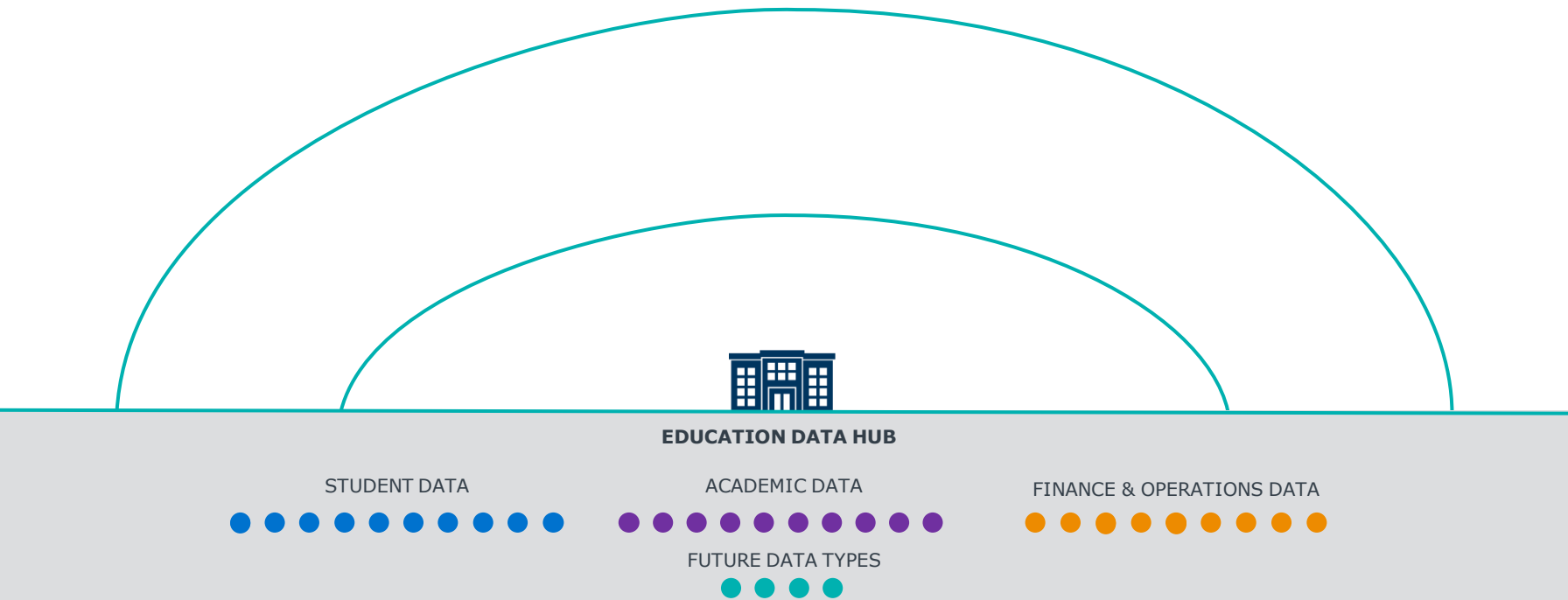
FINANCE & OPERATIONS DATA



The Education Data Hub Empowers Your Stakeholders



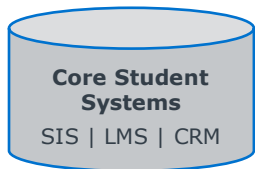
...and Powers Your Current (and Future) Ecosystem



Education Data Hub

A Data Management Platform to Centrally Organize Student Information

Comprehensive Data Coverage



360-Degree View of the Student

EAB's **Quad higher education data model** organizes campus-wide information by business-use data definitions that are system- and vendor-agnostic



- Contact info
- High school GPA
- Housing



- Degree
- Registered credits
- Term level



- Accounts receivable
- Financial aid
- Alumni giving



- Student surveys
- Privacy preferences
- Wealth indicators

One-Stop Source of Campus-Wide Data



User-friendly interface for data model access and export building



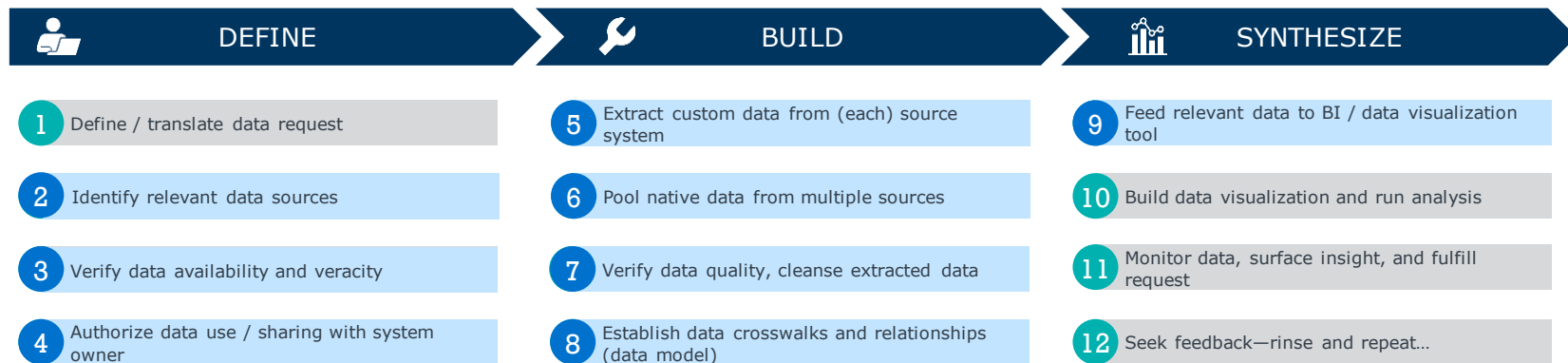
Direct connection to reporting, analytics, and BI environments



Customized integrations between existing student systems and datasets

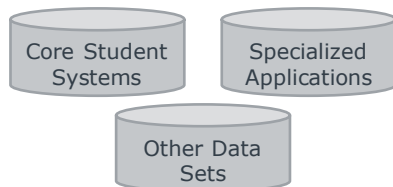
A Platform to Facilitate Agility

Institution-Directed Automation of the Data Lifecycle Supported by EAB



Education Data Hub

COMPREHENSIVE DATA COVERAGE



HIGHER EDUCATION DATA MODEL

- ✓ System- and vendor-agnostic foundation for organizing all data
- ✓ "Glass Box" configuration to reflect system customizations, governance decisions, and user preferences
- ✓ Extensible model that evolves with institution's data needs

ONE-STOP SOURCE FOR CAMPUS WIDE DATA



User-friendly interface for data model access and export building



Direct connection to reporting, analytics, and BI environments



Customized integrations between existing systems and datasets

Want To Learn More About Education Data Hub?



Email me at
DKuehl@eab.com



Washington DC | Richmond | Birmingham | Minneapolis | New York

202-747-1000 | eab.com