



EAB

Make Data-Informed Faculty Line Planning Decisions for FY2021-22

APS Intensive | January 26, 2022

We will begin at 1:02 p.m. Eastern
Time once everyone has joined!



Taylor Holubar

Consultant, APS and Edify Partner Services

THolubar@eab.com

Connect with EAB



@EAB

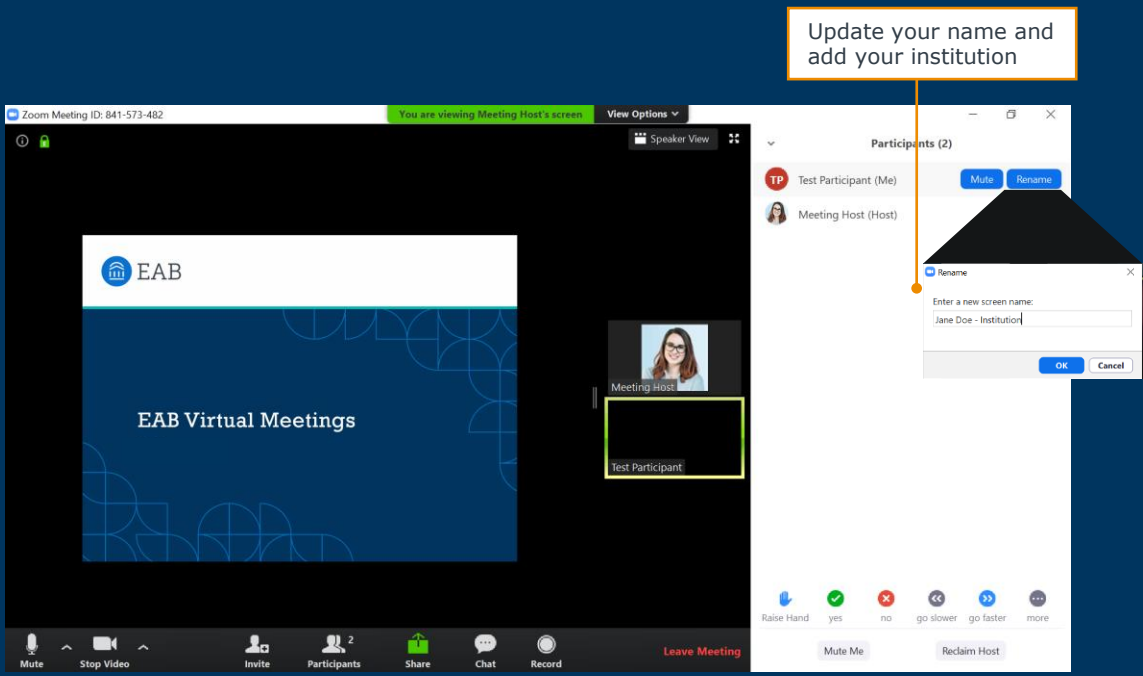


@EAB



@eab_

Update Your Name



Update your name and add your institution

Open Participants menu

Audio Mute/Unmute and Video Stop/Start

- In the main session together, please remain on **mute** and have your **video off**
- In breakout rooms, feel free to unmute and turn on your video

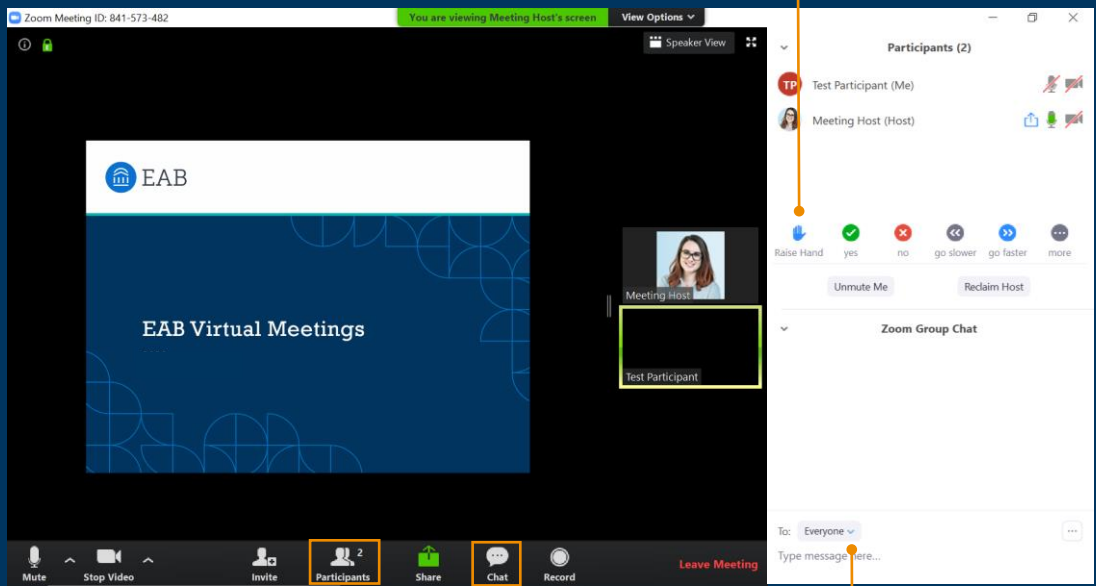
The screenshot displays a Zoom meeting interface. At the top, the EAB logo is visible. The main content area shows "EAB Virtual Session" with a decorative background. The bottom toolbar contains several icons: Mute (with a red slash), Stop Video (with a red slash), Invite, Participants (3), Share, Chat, Record, and Leave Meeting. A callout box on the left explains that red slashes indicate a muted microphone and an off camera. A callout box on the right explains that clicking the up arrow next to the microphone and camera icons provides access to audio and video options.

Red slashes mean your microphone is muted and your camera is off

Access audio and video options by clicking the up arrow next to the Mic and Camera icon

Chat and Nonverbal Feedback

Use icons to communicate answers and signals to presenter



Open Participants and Chat

Select whether you want to chat with everyone or a specific person

1 How Data Help Tell a Story

2 Worksheet Activity



Tenured Instructors Are In for the Long Haul

A Valuable (and Costly) Investment

Average Full-Time Salary, by AAUP Category and Academic Rank (Professor), 2019-2020 (Dollars)

AAUP Category	Average Full-Time Salary for Professor Rank <i>All Combined (Public, Private-Independent, Religiously Affiliated)</i>
Doctoral	160,080
Master's	104,555
Baccalaureate	108,070
Associate's with Ranks	91,949

60%

Of tenured faculty plan to work past age 70

15%

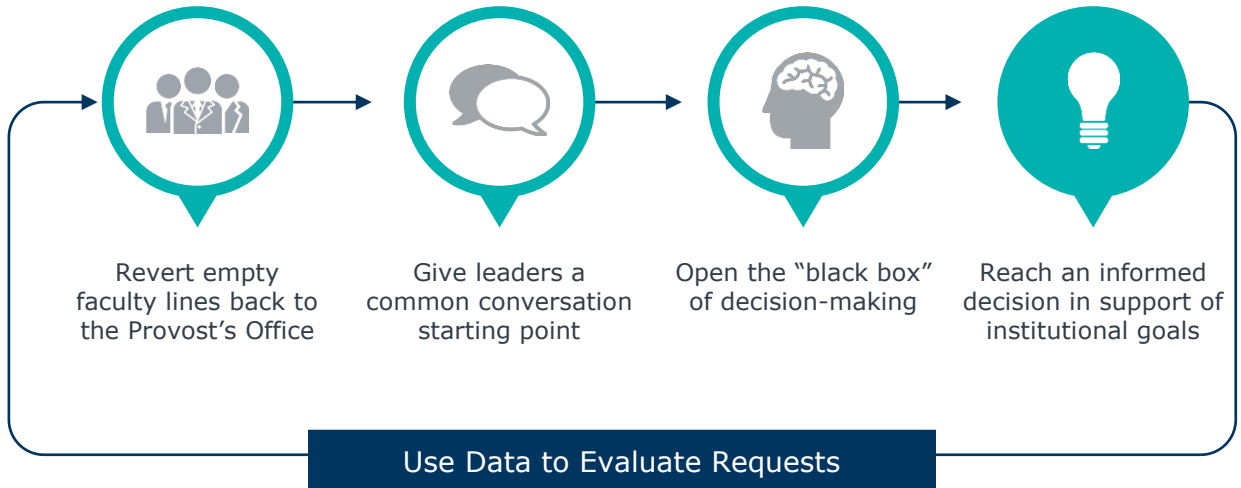
Of tenured faculty plan to work until age 80

Sources: Flaherty, C. (2020, April 8). Professor pay is flat - again. Retrieved from <https://www.insidehighered.com/news/2020/04/08/professor-pay-flat-again>; Marcus, J. (2015, October 9). *On campus, Older Faculty Keep On Keepin' On*. NPR. Retrieved from <https://www.npr.org/sections/ed/2015/10/09/446568519/on-campus-older-faculty-keep-on-keeping-on>

Embed Data in Your Faculty Line Decision Process

8

Assess True Need Before Responding to Requests



Source: EAB interviews and analysis

Three Takeaways Your Data Story Will Convey



Advocating to Fill or Add a Faculty Line

- 1 Establish Need**

Demonstrate how demand for student credit hours (SCH) is changing and why an additional faculty line will impact student progress.
- 2 Showcase Current Resource Allocation**

Include information on fill rates and class sizes to convey that there are few opportunities to reallocate resources by collapsing sections or increasing class sizes.
- 3 Highlight Impact**

Show the impact of an additional faculty line on department productivity and student progress by showing a reduction in faculty overload and increased opportunities for students to enroll in bottleneck courses.



1

How Data Help Tell a Story

2

Worksheet Activity

Breakout Room Facilitators

The APS/Edify Consulting and Strategic Leader (SL) Teams

Room 1



Taylor Holubar
THolubar@eab.com

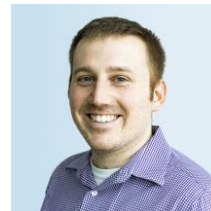


Erin Scallen
EScallen@eab.com

Room 2



Simone Williams
SWilliams@eab.com



Brian Parady
BParady@eab.com

Room 3



Kurtis Hagans
KHagans@eab.com



Louis Fierro
LFierro@eab.com


Log Into the APS Platform

Log In

- 1 <https://reports.eabanalytics.com/>
- 2 Trouble logging in? Please reach out to APSSupport@eab.com for help!

Login - EAB Analytics

reports.eabanalytics.com/account.html?lastUrl=%252F#/login

 **EAB**

Login to EAB Analytics

E-mail
KHagans@eabuniversity.com

Password
.....

Remember me

[Forgot password?](#)

- Enter your institutional email address
- Click "Forgot password?" to receive a password reset email

Please Complete the Follow-Up Survey Later!



You will receive a follow-up email later today that will include the survey and a link to today's session materials

THANK YOU!

We are currently in breakout rooms. You can rejoin your session by clicking **Breakout Rooms** in your Zoom menu bar. If you have any questions or need assistance, please send a private chat to the Meeting Host.





Washington DC | Richmond | Birmingham | Minneapolis

202-747-1000 | eab.com

 [@eab](https://twitter.com/eab)  [@eab_](https://www.linkedin.com/company/eab_)  [@WeAreEAB](https://www.facebook.com/WeAreEAB)  [@eab.life](https://www.instagram.com/eab.life)

