

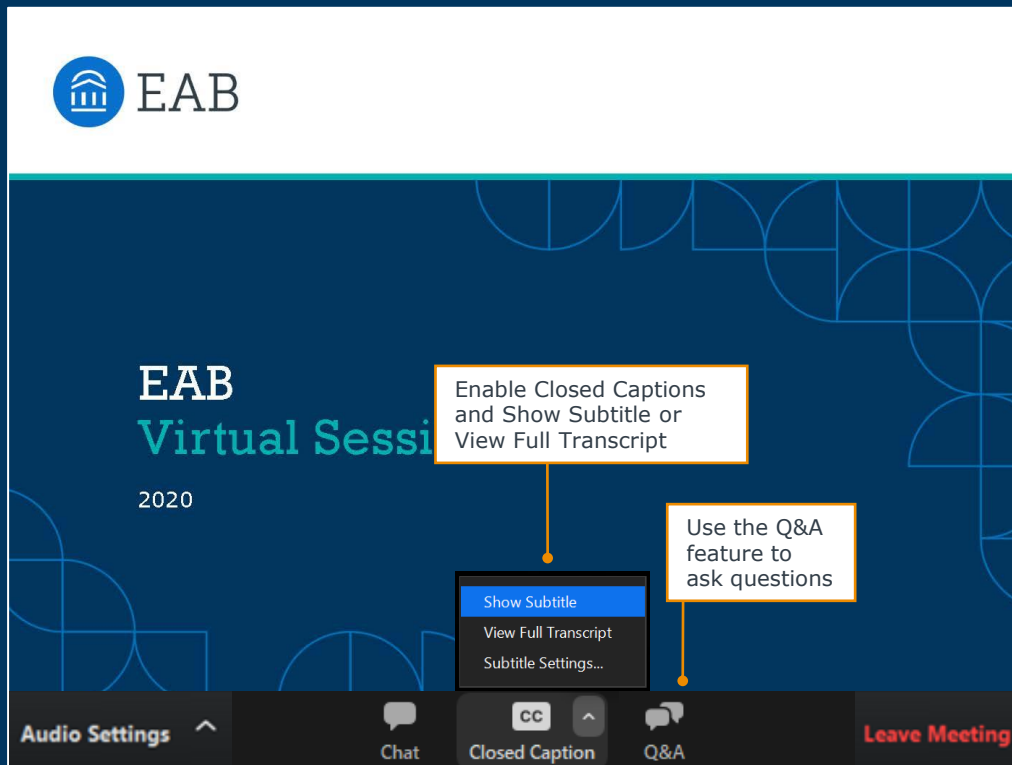


EAB

Starfish Product Roadmap Overview

February 18th 2022

Using the Q&A and Closed Captioning Features



Meet Your Product Team



Tosin Aje-Adegbite
*Senior Director,
Starfish Product
Management*



Grace Maddock
*Director,
Starfish Product
Management*



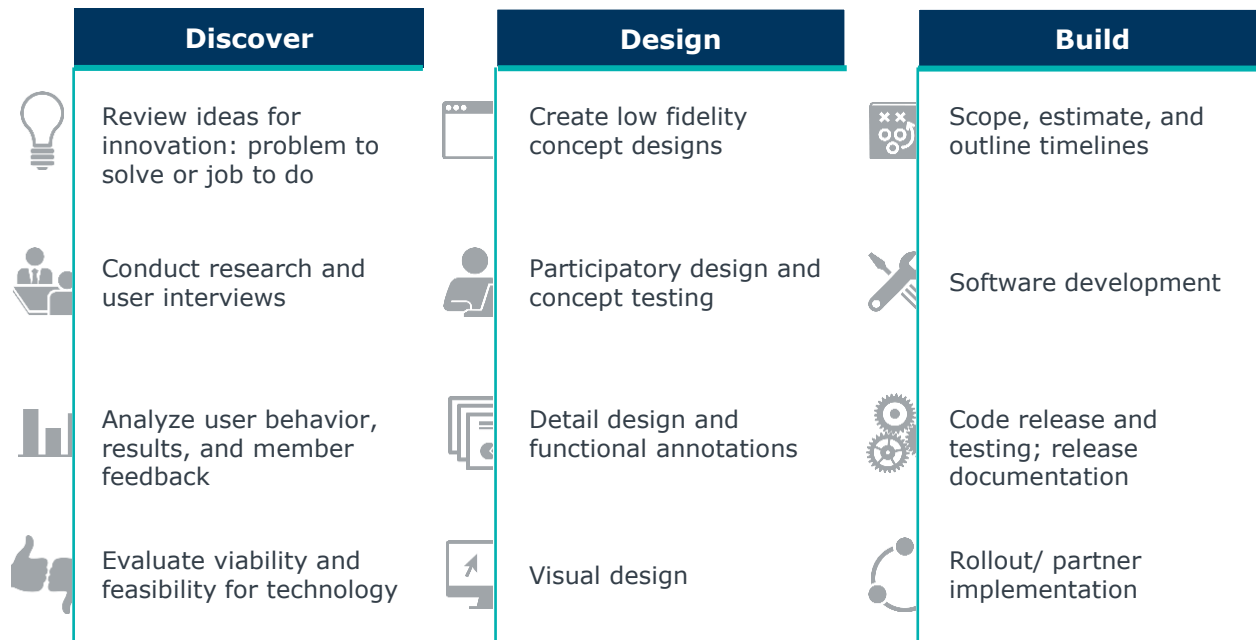
Elise West
*Director, Starfish
Product Management*



Chelsea Hunt
*Senior UX Designer,
Starfish Product
Management*

Product Development Process

4



EAB's software development process follows agile development best practices with deep input from users, partners, and prospects every step of the way. Future capabilities are subject to change, as well as trade secret & proprietary. Do not capture or distribute.



PI (Program Increment) planning is a SAFE (Scaled Agile Framework) ceremony that is performed every quarter.

- ☐ Create a plan. Commit to completing it within the quarter.
- ☐ The goal is to deliver value every quarter.
- ☐ Helps to ensure we are evaluating and executing on a roadmap every quarter.

Starfish Product Objectives

6

1

Interoperability

Strengthen and develop our interoperability capabilities, which will provide us with opportunities to support larger institutions and take advantage of additional functionality.

2

Communications

Smoother communication channels between faculty and students to enable faster responses to time-sensitive or urgent needs.

3

Visible Outcomes

Deliver proof of outcomes in a consumable format to our partners (i.e. the actions that are taken are yielding positive results).

4

Inclusive Data

Support our partners by addressing data sync issues, equity concerns around mislabeling race and gender, and making workflows smoother.



Starfish: FY22 Roadmap

Area	Priority Concepts (comprised of sub-concepts)	Estimated PI	Status
Core	Communications: Hardening the current communications tools implementation to support scaling.	PI1	Completed
	Student Profile: accept and support different data as regards to gender, race, identity etc. where it applies.	PI2	Completed
	Student updates: Students can clear a to-do	PI3	In Progress
	Notes and Tracking: Provide the ability to attach a documents to the student file via case notes or outcomes tracking.	PI4	In Research
	Automated Tracking Items	PI4	In Research
	Data Ingest: Improve Data Ingest Performance	PI4	In Research
Integrations	Provide support for Blackboard Ultra	PI1	Completed
	Improve performance of Canvas integrations	PI2	Completed
Reporting/ Analytics	Reporting: Deliver visibility into outcomes via reports/dashboards	P14	In Backlog

Recent Releases

> **LMS: Canvas Integration Scalability Work**

Improved the performance for Canvas LMS Integration to make it possible for larger institutions to use it without error.

> **Communication Hardening for SMS**

Updated our texting capability to ensure support for the new short codes.

> **Blackboard Integration Updates**

Support for Blackboard Ultra.

> **Inclusive Data Updates**

Includes:

Support for legal name as well as preferred name

Updating student pronouns

Coming Soon

> **Student Can Close To Do**

Giving students the ability to complete to-do tracking items

> **Analytics: Include Students**

students excluded from the term-based scoring will no longer have a score.

Roadmap Look Ahead

> **Attaching files to notes and tracking items**

Providing the ability to attach a document to a file or tracking item.

> **Automated Tracking Items (formerly Automated Kudos)**

Tracking items created automatically based on a preset rule.

Delivered!: Student Preferred Name and Pronouns

Currently in Test will be released to Prod April 1st 2022



Student can update their profile with preferred name and pronouns



Student is searchable by preferred name and legal name



If data already exists in your institution's SIS it can be mapped to fields in Starfish

The screenshot shows a mobile application interface for a student profile. At the top, the status bar shows 9:41 and signal strength. The app header is blue with a hamburger menu icon and the word "Profile". Below the header, there are two tabs: "EDIT PROFILE" (highlighted in orange) and "NOTIFICATIONS". The profile section features a circular profile picture of a young woman, the name "Nette Burmese" in large text, and the pronouns "(She/En/They)" below it. A timestamp "Last updated 3:47 PM, 12/01/2018" is displayed. The "Profile Information" section follows, with a note: "Some of your information is automatically updated by your institution and cannot be edited." The "Preferred First Name" field contains "Nette". Below it, a note says "Let your connections know a name to call you." The "Pronouns" section has a "Clear all" link and three buttons: "× She", "× En", and "× They". A note below says "Let your connections know how to refer to you." At the bottom, there is a link "Don't see your pronouns? [Add Custom Pronouns](#)". The footer contains two buttons: "CLEAR CHANGES" and "SAVE CHANGES".


Coming Soon!: Include Students Score

Operational Analytics

Students with the following credentials are included in both modeling and predictions:

Students with any credential selected below will have a score created & displayed
Student credential value(s) are sent as part of the credential field in the student_program file

- ☐ 00 - not seeking credential
- ☒ 01-AA
- ☒ 02-AS
- ☒ 03-AAS
- ☒ 04-BS
- ☒ 05-BA
- ☐ 06-MA
- ☐ 07-MS
- ☐ 08-MBA
- ☐ 09-PhD
- ☐ 10-MD
- ☐ 11-JD
- ☐ 12-EdD
- ☐ 13-PsyD
- ☐ 14-ThD
- ☐ 15-Certificate
- ☐ 42-Badge
- ☒ 90-Other 2-year degree
- ☒ 91-Other 4-year degree
- ☐ 92-Other doctoral or professional degree
- ☐ 93-Other credential
- ☐ 99 - Data is unavailable



Design concept

Feature delivered may differ

CANCEL
SAVE CHANGES

NEW 3.x Configuration

replaces

2.x Configuration Methods

Customize Students Included in Scoring


You may customize the Operational Analytics by choosing which students will receive a retention score for a term. Default scoring behavior for each term a student is enrolled:

- Non-degree seeking students are excluded (program_cip_code = 00.1111)

Student & term specific attribute data is sent as desired by sending values in the same format as other boolean Starfish Attributes (true/false; t/f; yes/no; y/n; on/off). For example:

include = [user_integration_id],[term_id],INCLUDE_OP_ANALYTICS, T

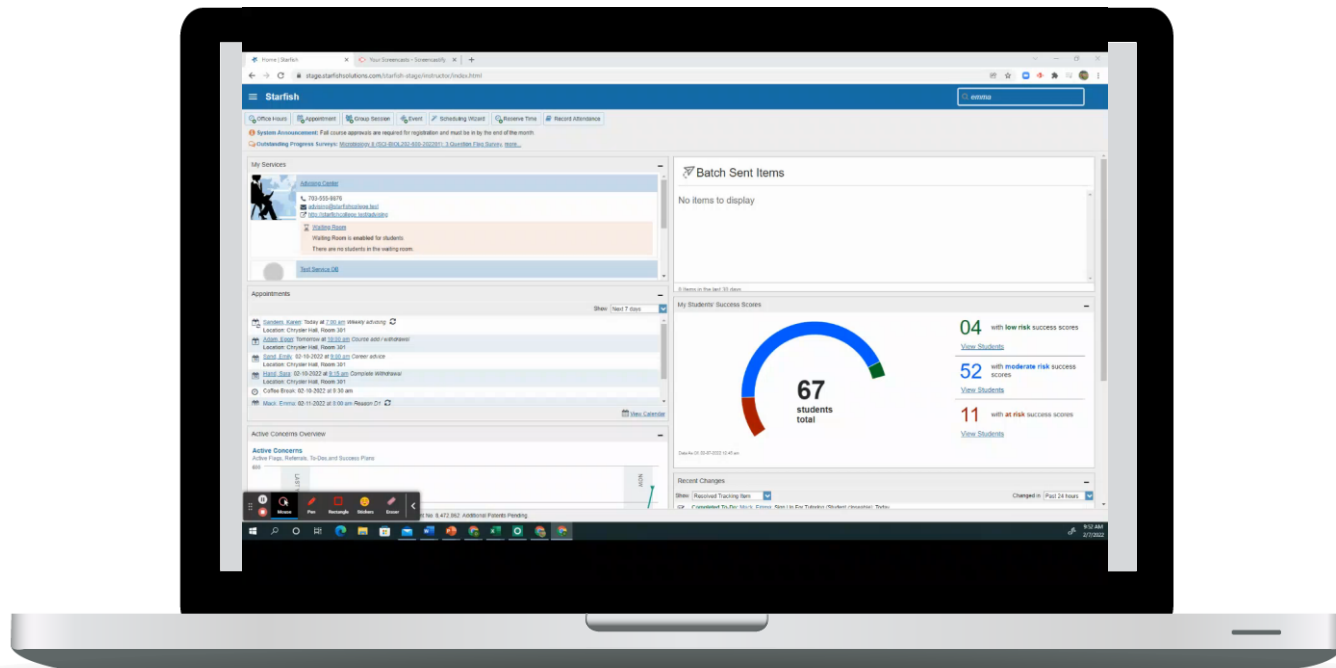
exclude = [user_integration_id],[term_id],INCLUDE_OP_ANALYTICS, F



Tip: To explicitly include or exclude a student from scoring for a term, supply the term-based attribute INCLUDE_OP_ANALYTICS before the term start date. This attribute overrides the default student behavior for the specified term (see above.)

Coming Soon!: Student Can Close To-dos'

11



- > **Preferred Name**
Submission by Brenna Andrews San Bernandino Community College
- > **Support for updating Student Pronouns in student profile**
Submission by Emily Salyards Carroll Community College
- > **LTI for Blackboard Ultra Integration and Single Sign-on**
Submission by Amanda Kuzel, North Dakota University System
- > **Progress Survey Submit Popup specify “..for all the student this section”**
Submission by Steve Reed Santa Barbara City College
- > **Allow copying of appointment type in setup**
Submission by Mary Beth Thompson College of Saint Benedict & Saint John’s University

Submit your ideas to Compass!

eabcommunity.force.com/Compass

Final Thoughts

Please take a moment to answer this final poll question to provide your overall experience on today's session.



Washington DC | Richmond | Birmingham | Minneapolis | New York
Washington DC | Richmond | Birmingham | Minneapolis | New York | Chicago
202-747-1000 | eab.com
202-747-1000 | eab.com