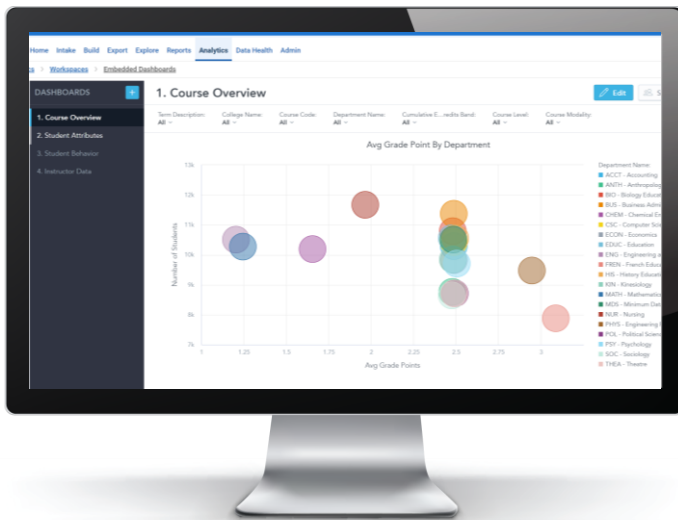


Course Success Equity

Academic success is a key pillar of overall student success. The Course Success Equity Accelerator enables instructors, academic administrators, and executives responsible for overseeing diversity to understand where student performance in courses differs and identify whether there are disparities in outcomes across demographic groups. Beyond just performance metrics, users can also start to understand whether the academic resources made available on campus (use of the learning management system, tutoring, multiple course modalities) are having a positive impact and use the data to inspire opportunities for change.



Identify gaps in course outcomes

In one workspace, assess outcomes like GPA and credits earned by department, program, and course across subpopulations of students

Narrow in on behaviors linked to better success outcomes

Understand whether course modality, LMS engagement (by students and instructors), or tutoring correlate with improved outcomes

Explore instructor data to identify which practices promote success

Use course performance data to engage your departments and faculty and identify growth opportunities

How Edify Accelerates Insight to Action

BRING DATA TOGETHER

Incorporate data elements from multiple sources to comprehensively look at academic performance
e.g., SIS, LMS, and tutoring system data

CREATE A CULTURE OF DATA CONFIDENCE

Use defined and governed data to produce critical measures, such as average GPA and DFW rates within a course or department

DRIVE INSIGHT ACROSS STAKEHOLDERS

Enable your campus practitioners to dig deeper into course-level data, cross-sectioned with behavior and attribute data not available in your LMS

MOVE AT THE SPEED OF CONVERSATION

The data is displayed in templated, customizable dashboards designed to delve deeper in the moment. Use this collection of dashboards to analyze course-level data and use the insights to work directly with department heads and faculty to address potential barriers to success with improved processes, programming, or faculty changes.

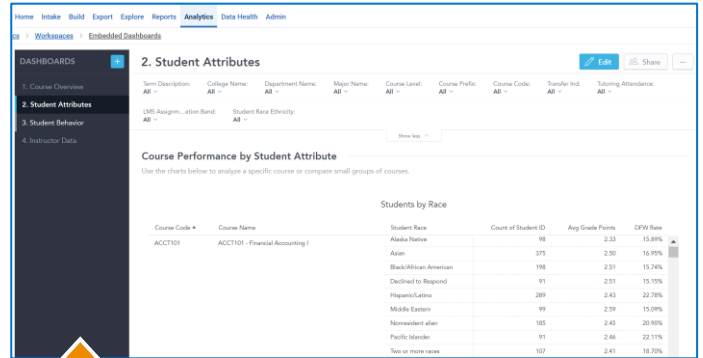
Customizable Dashboards to Make Sense of Your Data

The insights and KPIs highlighted in the dashboards below allow you to cross-walk SIS data with that of your LMS and tutoring solution (e.g., Navigate or Starfish).



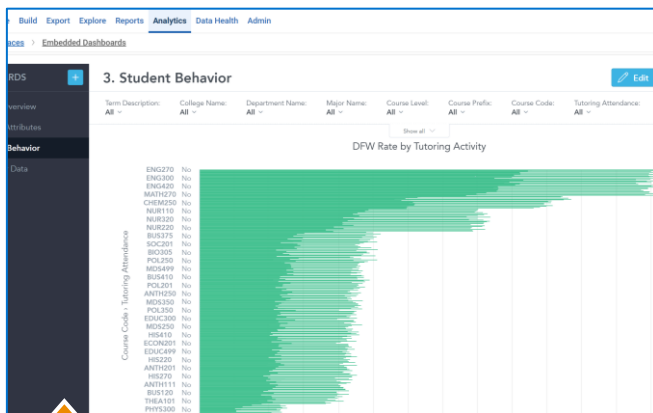
COURSE OVERVIEW

- Start with a high-level institutional comparison of performance indicators (GPA, DFW rates), by department and across terms
- Visualize which departments have the highest and lowest tutoring participation and LMS completion (two factors that may influence success)
- View proportions of vulnerable populations in each program by race, Pell-eligibility, transfer and first-generation statuses



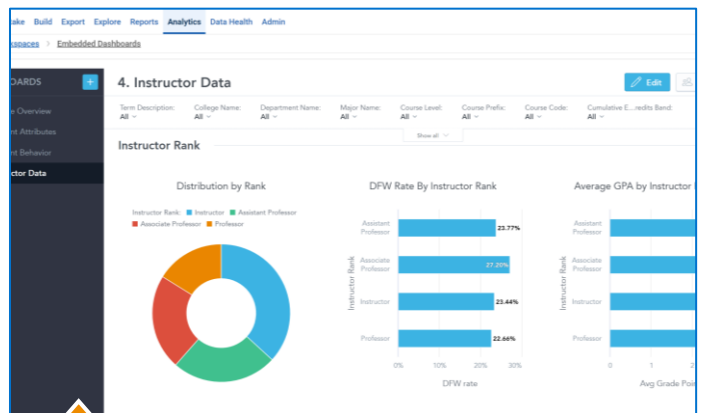
STUDENT ATTRIBUTES

- Identify the courses in which students are struggling and narrow down by student population type (e.g., Pell-eligible, first-gen, race, etc.)
- We recommend first filtering by department or college and then using further filters to understand how outcomes vary if students took advantage of resources (such as the LMS or tutoring)
- Each table can be further analyzed in Edify's built-in analytics explorer to create visuals



STUDENT BEHAVIOR

- Investigate specific student behaviors (such as assignment submission, tutoring activity, credits earned) and their impact on course outcomes
- Course outcomes are measured through GPA, DFW rates, next term persistence, and course completion rate



INSTRUCTOR DATA

- View student outcomes by instructor attributes (e.g., rank, type, course modality taught) in order to uncover any trends that have opportunities for intervention
- Along with instructor gender and race data, use this dashboard to inform hiring committees and encourage equitable hiring practices

Please note, we are dedicated to deliver these dashboards based on any required source data and are very flexible. Metrics used in the dashboards are equally flexible and can be changed on demand by your team or in partnership with your EAB service team.

Analytics for Stakeholders Across Campus

Every Edify workspace is designed to answer a common set of business questions that higher education leaders face. The Course Success Equity Accelerator is designed to enable student success and academic leaders to surface equity gaps in course outcomes by investigating outcomes by student population, as well as the impact of student behaviors and instructor demographics on success.



Student Success

Questions

- Do specific student behaviors, like assignment completion and tutoring participation, affect course outcomes?
- What disparities in course outcomes exist across different student populations?
- Are there specific courses that interfere with student success over others?

Potential Actions

- Implement an intervention campaign to promote support services utilization.
- Conduct an outreach campaign with specific student populations to provide support.
- Partner with instructors to run progress report campaigns to routinely check in on individual student course performance.



Academic Administrators

Questions

- What practices have had measurably high impact on course outcomes?
- Which departments have the highest and lowest rates of tutoring participation and LMS utilization?
- Do course outcomes vary by instructor rank and type? How about course modality?
- How diverse is our teaching staff?

Potential Actions

- Identify growth opportunities for instructors not using high-impact practices to implement the practices.
- Engage instructors in conversations to revamp course curriculum.
- Conduct LMS training with low LMS utilization departments to help them understand the importance.



Instructors

Questions

- Which courses have particularly large gaps in outcomes across student populations and within a course?
- How does LMS utilization affect course outcomes?

Potential Actions

- Identify courses for redesign and deployment of supplemental support resources.
- Partner with advisors on intervention strategies to better support students.



Interested in Learning More?

Contact your Strategic Leader or
edifypartnersuccess@eab.com.